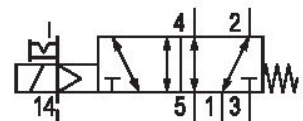
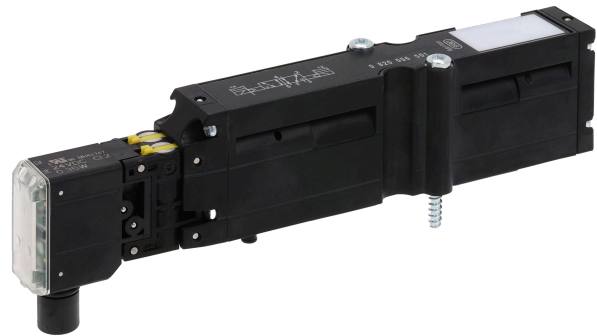


# 5/2-directional valve, Series HF02-LG

0820056051

General series information  
Series HF02-LG

- The AVENTICS Series HF02-LG extends the product family of universal valve systems with a high flow rate of up to 1400 l/min.



## Technical data

Industry  
Industrial

Activation  
Electrically

Nominal flow Q<sub>n</sub>  
1400 l/min

Working pressure min.  
-0.9 bar

Working pressure max  
10 bar

Operational voltage  
24 V DC

DC operating voltage  
24 V

Pilot valve width  
16 mm

Valve type  
Spool valve, positive overlapping

Voltage tolerance DC  
-15% / +20%

Manual override  
with detent

Actuating control  
Single Solenoid

Sealing principle  
Soft Seal

Pilot  
External  
Internal

Certificates  
UR (Underwriters Laboratories)

Connection type  
Plate connection

Blocking principle  
Single base plate principle

Can be assembled into blocks  
Can be assembled into blocks

Control pressure min.  
3 bar

Control pressure max.  
10 bar

Min. ambient temperature  
0 °C

Max. ambient temperature  
50 °C

Min. medium temperature  
0 °C

Max. medium temperature  
50 °C

Medium  
Compressed air

Max. particle size  
5 µm

Oil content of compressed air min.  
0 mg/m<sup>3</sup>

Oil content of compressed air max.  
5 mg/m<sup>3</sup>

Pilot control exhaust  
With collective pilot air exhaust

Flow conductance b  
0.38

Flow conductance C  
6.13 l/(s\*bar)

Power consumption DC  
0.35 W

LED status display  
Yellow

Duty cycle  
100 %

Typ. switch-on time  
20 ms

Typ. switch-off time  
30 ms

Pilot valve width  
16 mm

Protection class with connection  
IP65

Protective circuit  
Z-diode

Reverse polarity protection  
Protected against polarity reversal

mounting screws  
cross recessed DIN EN ISO 4757-Z2

Mounting screw tightening torque  
1.3 Nm

Weight  
0.144 kg

## Material

Housing material  
Polyamide

Seal material  
Acrylonitrile butadiene rubber

Hydrogenated acrylonitrile butadiene rubber

Part No.  
0820056051

## Technical information

The pilot type (external/internal) is not implemented in the valve, but in the end plate of the valve system.

The pilot valve is UL (Underwriters Laboratories) certified.

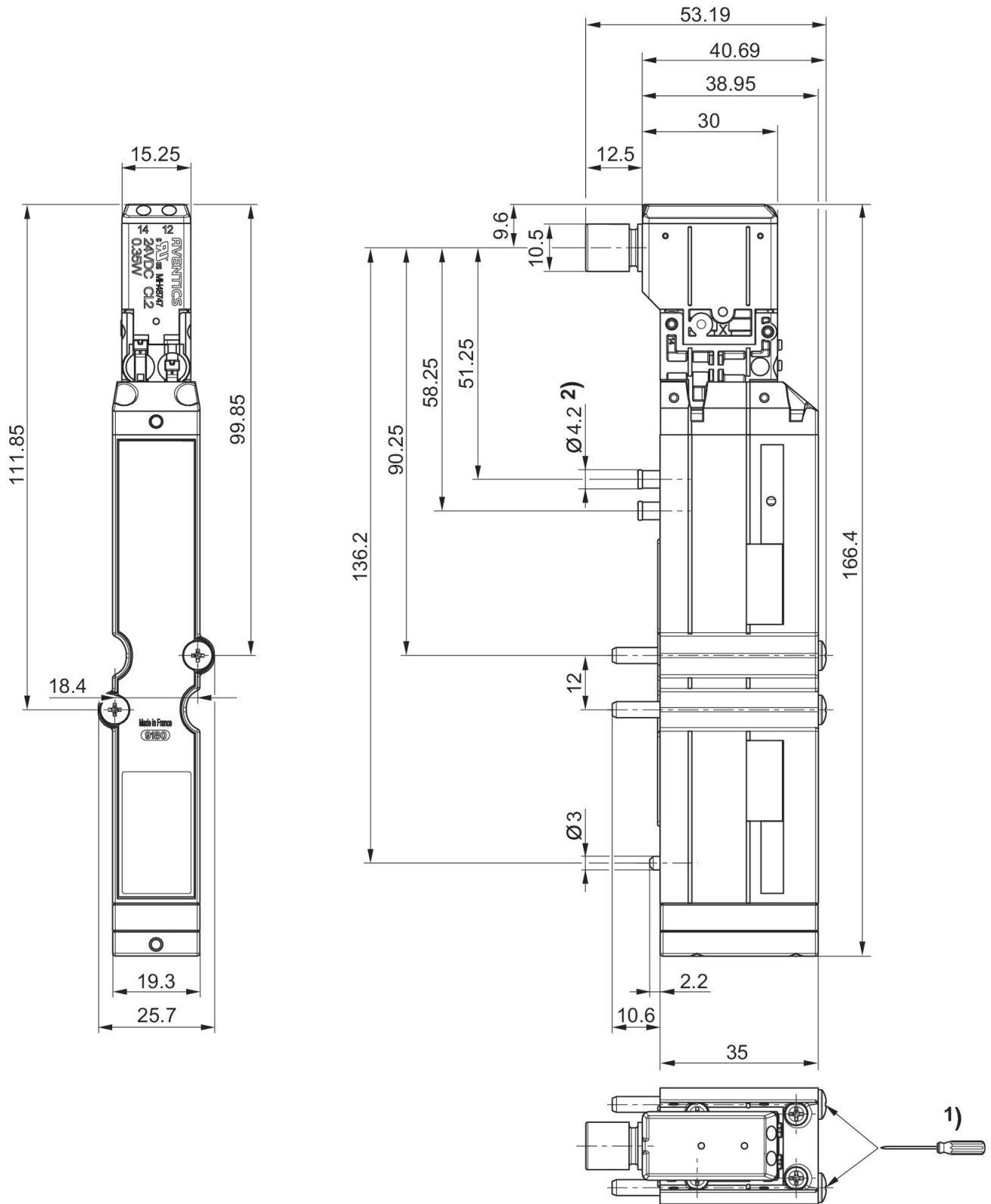
The min. control pressure must be adhered to, since otherwise faulty switching and valve failure may result!

The pressure dew point must be at least 15 °C under ambient and medium temperature and may not exceed 3 °C .

The oil content of compressed air must remain constant during the life cycle.

Use only the approved oils from AVENTICS. Further information can be found in the “Technical information” document (available in <https://www.emerson.com/en-us/support>).

## Dimensions



1) = 1.1 +0.2 Nm 800tr/min. max.